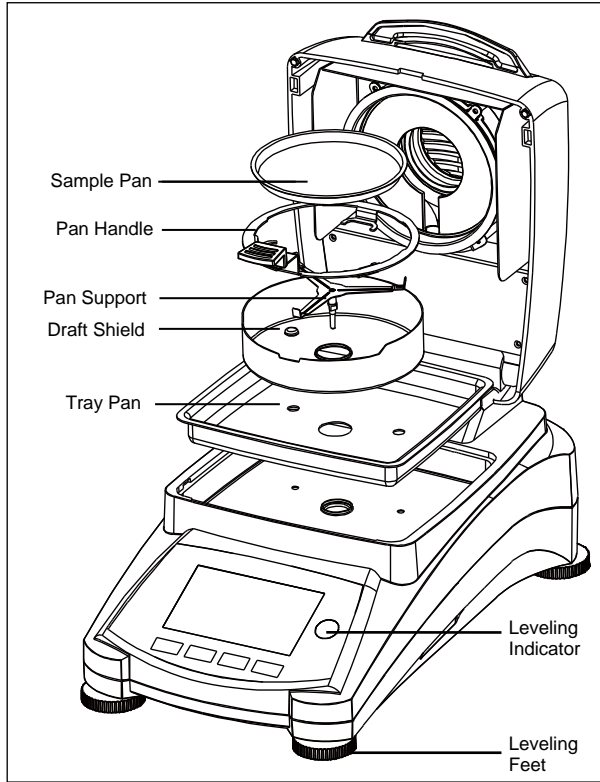
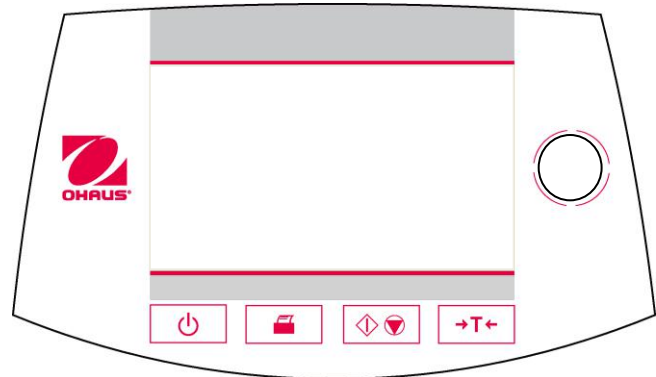







ASSEMBLY



CONTROLS



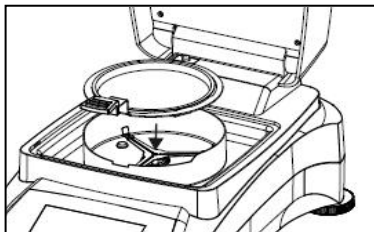
	Turns On or Off display and fan.
	When pressed, sends Print command.
	When pressed, either starts or stops the drying process.
	When pressed, performs Tare function.
	Leveling indicator
Leveling Feet	Used to level the Moisture Analyzer.

MAKING A SIMPLE MEASUREMENT

Use one of the included absorbent glass fiber pads as a sample to become familiar with the instrument and the various displays.



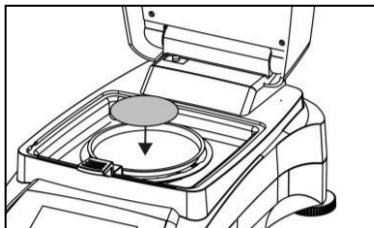
If the display is not visible and the unit is plugged into a power source, press the On/Off button.



Directly start a measurement.

Open the cover on the Moisture Analyzer.
Clean the pan.

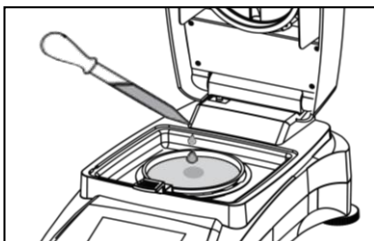
Place the pan handle in the sample chamber. Ensure that the tongue of the pan handle fits exactly in the slot of the draft shield element.



Place the empty sample pan and glass fiber pan in the pan handle. The sample pan must lie flat in the pan handle.

Note: It is advisable for you to work with the pan handle at all times. The pan handle is ergonomic, safe and provides protection against possible burns due to a hot sample pan.

Close the cover. This sets the Moisture Analyzer to zero automatically.



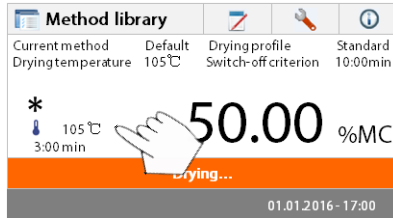
Open the cover on the Moisture Analyzer.

Wet the glass fiber pan with a 0.5 to 1 gram of water.

Note: Minimum sample size must be greater than 0.5 gram.

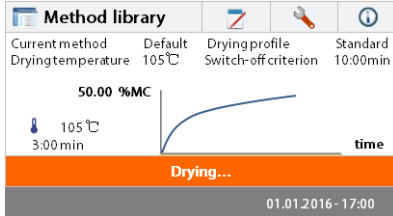
Starting the test

Close the cover, the Moisture Analyzer starts the drying and measurement process automatically.



Drying and measurement

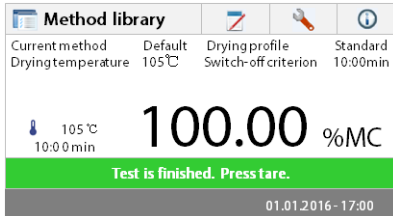
You are now able to follow the progress of the drying cycle on the display. This first display comes up automatically when the test was started.




Observing the test progress

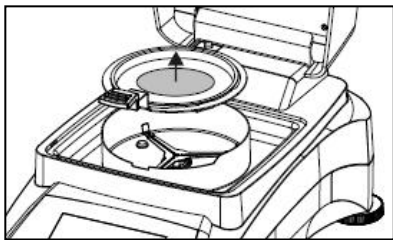
There are five displays available when the Moisture Analyzer is running a test. (Showing %MC, %DC, g, %RG or a curve.)

When pressing the data area while %MC is shown, the display will cycle through each of the five displays.



The display indicates the Method Name, Temperature/Time, actual temperature, elapsed time duration of the test, moisture and curve. The test automatically stops at the end of the measurement.

If you want to end the test sooner, press the  button.



Congratulations! You have just performed your first measurement with your moisture analyzer.

Carefully remove the sample pan handle from the drying area.

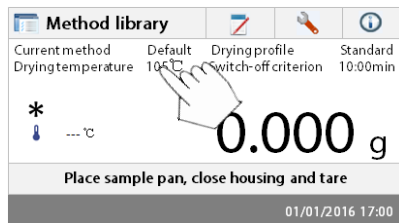


WARNING: As the pan and sample may still be hot, you should let these cool down before removing the pan from the pan handle!

Edit default method


The analyzer comes with a default method preinstalled. The settings of the default method are shown on the display. To edit the settings, press on the area where the settings are displayed.


MB90 Moisture Analyzer interface

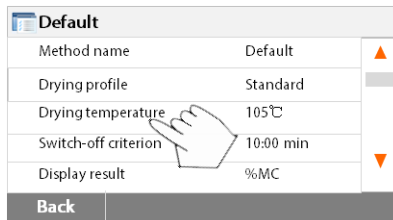


MB120 Moisture Analyzer interface



 MB120 moisture analyzer features SmartGuide™ function. It can automatically generate suitable test method for your samples.

To use it, Click  on the top right corner of the interface.



Press the setting items to edit them.

Please see the instruction manual for more details.

For the full instruction manual, please scan the QR code or click the link below:

MB120 Instruction Manual:
<http://dmx.ohaus.com/WorkArea/showcontent.aspx?id=4294974363>

MB90 Instruction Manual:
<http://dmx.ohaus.com/WorkArea/showcontent.aspx?id=4294974528>



MB120 Manual



MB90 Manual



P/N 30241177F